

Subdivision No.
2023

PLEASANT VIEW HOMES, PHASE III

A SUBDIVISION LOCATED IN THE NORTHWEST ONE-QUARTER (NW1/4) OF SECTION 7,
TOWNSHIP 13 NORTH, RANGE 59 WEST, 94M, MISSOULA COUNTY, MONTANA

LOT NO.	ORIG. PLAT AREA (ACRES)	NET PLAT AREA (ACRES)
1	0.2000	0.2000
2	0.2000	0.2000
3	0.2000	0.2000
4	0.2000	0.2000
5	0.2000	0.2000
6	0.2000	0.2000
7	0.2000	0.2000
8	0.2000	0.2000
9	0.2000	0.2000
10	0.2000	0.2000
11	0.2000	0.2000
12	0.2000	0.2000
13	0.2000	0.2000
14	0.2000	0.2000
15	0.2000	0.2000
16	0.2000	0.2000
17	0.2000	0.2000
18	0.2000	0.2000
19	0.2000	0.2000
20	0.2000	0.2000
21	0.2000	0.2000
22	0.2000	0.2000
23	0.2000	0.2000
24	0.2000	0.2000
25	0.2000	0.2000
26	0.2000	0.2000
27	0.2000	0.2000
28	0.2000	0.2000
29	0.2000	0.2000
30	0.2000	0.2000
31	0.2000	0.2000
32	0.2000	0.2000
33	0.2000	0.2000
34	0.2000	0.2000
35	0.2000	0.2000
36	0.2000	0.2000
37	0.2000	0.2000

LOT NO.	ADDRESS BLOCK
1	CL. PLYNN LANE
2	CL. PLYNN LANE
3	CL. PLYNN LANE
4	CL. PLYNN LANE
5	CL. PLYNN LANE
6	CL. PLYNN LANE
7	CL. PLYNN LANE
8	CL. PLYNN LANE
9	CL. PLYNN LANE
10	CL. PLYNN LANE
11	CL. PLYNN LANE
12	CL. PLYNN LANE
13	CL. PLYNN LANE
14	CL. PLYNN LANE
15	CL. PLYNN LANE
16	CL. PLYNN LANE
17	CL. PLYNN LANE
18	CL. PLYNN LANE
19	CL. PLYNN LANE
20	CL. PLYNN LANE
21	CL. PLYNN LANE
22	CL. PLYNN LANE
23	CL. PLYNN LANE
24	CL. PLYNN LANE
25	CL. PLYNN LANE
26	CL. PLYNN LANE
27	CL. PLYNN LANE
28	CL. PLYNN LANE
29	CL. PLYNN LANE
30	CL. PLYNN LANE
31	CL. PLYNN LANE
32	CL. PLYNN LANE
33	CL. PLYNN LANE
34	CL. PLYNN LANE
35	CL. PLYNN LANE
36	CL. PLYNN LANE
37	CL. PLYNN LANE

LEGEND

1 LOT 17 PLAT AREA IS 1/4 ACRES LESS THAN THE SIZE SET FORTH IN THE PLAT AS SHOWN ON THE PLAT MAP

2 PLAT AREA IS 1/4 ACRES LESS THAN THE SIZE SET FORTH IN THE PLAT AS SHOWN ON THE PLAT MAP

3 PLAT AREA IS 1/4 ACRES LESS THAN THE SIZE SET FORTH IN THE PLAT AS SHOWN ON THE PLAT MAP

4 PLAT AREA IS 1/4 ACRES LESS THAN THE SIZE SET FORTH IN THE PLAT AS SHOWN ON THE PLAT MAP

5 PLAT AREA IS 1/4 ACRES LESS THAN THE SIZE SET FORTH IN THE PLAT AS SHOWN ON THE PLAT MAP

6 PLAT AREA IS 1/4 ACRES LESS THAN THE SIZE SET FORTH IN THE PLAT AS SHOWN ON THE PLAT MAP

7 PLAT AREA IS 1/4 ACRES LESS THAN THE SIZE SET FORTH IN THE PLAT AS SHOWN ON THE PLAT MAP

8 PLAT AREA IS 1/4 ACRES LESS THAN THE SIZE SET FORTH IN THE PLAT AS SHOWN ON THE PLAT MAP

9 PLAT AREA IS 1/4 ACRES LESS THAN THE SIZE SET FORTH IN THE PLAT AS SHOWN ON THE PLAT MAP

10 PLAT AREA IS 1/4 ACRES LESS THAN THE SIZE SET FORTH IN THE PLAT AS SHOWN ON THE PLAT MAP

11 PLAT AREA IS 1/4 ACRES LESS THAN THE SIZE SET FORTH IN THE PLAT AS SHOWN ON THE PLAT MAP

12 PLAT AREA IS 1/4 ACRES LESS THAN THE SIZE SET FORTH IN THE PLAT AS SHOWN ON THE PLAT MAP

13 PLAT AREA IS 1/4 ACRES LESS THAN THE SIZE SET FORTH IN THE PLAT AS SHOWN ON THE PLAT MAP

14 PLAT AREA IS 1/4 ACRES LESS THAN THE SIZE SET FORTH IN THE PLAT AS SHOWN ON THE PLAT MAP

15 PLAT AREA IS 1/4 ACRES LESS THAN THE SIZE SET FORTH IN THE PLAT AS SHOWN ON THE PLAT MAP

16 PLAT AREA IS 1/4 ACRES LESS THAN THE SIZE SET FORTH IN THE PLAT AS SHOWN ON THE PLAT MAP

17 PLAT AREA IS 1/4 ACRES LESS THAN THE SIZE SET FORTH IN THE PLAT AS SHOWN ON THE PLAT MAP

18 PLAT AREA IS 1/4 ACRES LESS THAN THE SIZE SET FORTH IN THE PLAT AS SHOWN ON THE PLAT MAP

19 PLAT AREA IS 1/4 ACRES LESS THAN THE SIZE SET FORTH IN THE PLAT AS SHOWN ON THE PLAT MAP

20 PLAT AREA IS 1/4 ACRES LESS THAN THE SIZE SET FORTH IN THE PLAT AS SHOWN ON THE PLAT MAP

21 PLAT AREA IS 1/4 ACRES LESS THAN THE SIZE SET FORTH IN THE PLAT AS SHOWN ON THE PLAT MAP

22 PLAT AREA IS 1/4 ACRES LESS THAN THE SIZE SET FORTH IN THE PLAT AS SHOWN ON THE PLAT MAP

23 PLAT AREA IS 1/4 ACRES LESS THAN THE SIZE SET FORTH IN THE PLAT AS SHOWN ON THE PLAT MAP

24 PLAT AREA IS 1/4 ACRES LESS THAN THE SIZE SET FORTH IN THE PLAT AS SHOWN ON THE PLAT MAP

25 PLAT AREA IS 1/4 ACRES LESS THAN THE SIZE SET FORTH IN THE PLAT AS SHOWN ON THE PLAT MAP

26 PLAT AREA IS 1/4 ACRES LESS THAN THE SIZE SET FORTH IN THE PLAT AS SHOWN ON THE PLAT MAP

27 PLAT AREA IS 1/4 ACRES LESS THAN THE SIZE SET FORTH IN THE PLAT AS SHOWN ON THE PLAT MAP

28 PLAT AREA IS 1/4 ACRES LESS THAN THE SIZE SET FORTH IN THE PLAT AS SHOWN ON THE PLAT MAP

29 PLAT AREA IS 1/4 ACRES LESS THAN THE SIZE SET FORTH IN THE PLAT AS SHOWN ON THE PLAT MAP

30 PLAT AREA IS 1/4 ACRES LESS THAN THE SIZE SET FORTH IN THE PLAT AS SHOWN ON THE PLAT MAP

31 PLAT AREA IS 1/4 ACRES LESS THAN THE SIZE SET FORTH IN THE PLAT AS SHOWN ON THE PLAT MAP

32 PLAT AREA IS 1/4 ACRES LESS THAN THE SIZE SET FORTH IN THE PLAT AS SHOWN ON THE PLAT MAP

33 PLAT AREA IS 1/4 ACRES LESS THAN THE SIZE SET FORTH IN THE PLAT AS SHOWN ON THE PLAT MAP

34 PLAT AREA IS 1/4 ACRES LESS THAN THE SIZE SET FORTH IN THE PLAT AS SHOWN ON THE PLAT MAP

35 PLAT AREA IS 1/4 ACRES LESS THAN THE SIZE SET FORTH IN THE PLAT AS SHOWN ON THE PLAT MAP

36 PLAT AREA IS 1/4 ACRES LESS THAN THE SIZE SET FORTH IN THE PLAT AS SHOWN ON THE PLAT MAP

37 PLAT AREA IS 1/4 ACRES LESS THAN THE SIZE SET FORTH IN THE PLAT AS SHOWN ON THE PLAT MAP



SCALE IN FEET
 1" = 20'
 1" = 40'
 1" = 80'

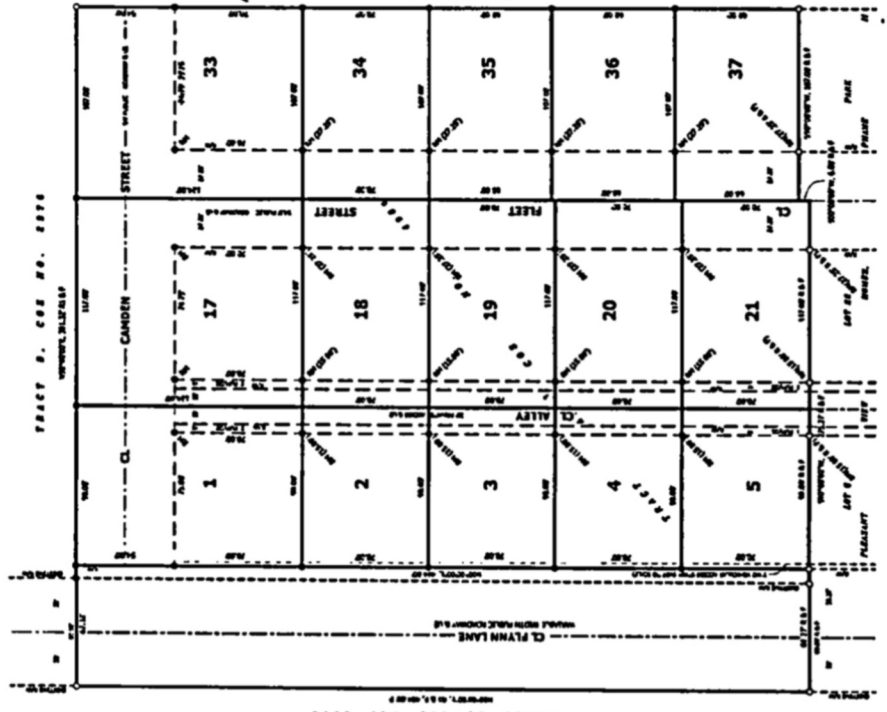
BASS OF BEARING
 "RIGHT" MEANS "RIGHT"
 "LEFT" MEANS "LEFT"

OWNER OF RECORD
 PLEASANT VIEW HOMES, INC.

SUBDIVISION AREA
 376.80 ACRES (376.80 ACRES NET)
 BEING THE SAME AS
 BEING THE SAME AS

PLEASANT VIEW HOMES,
 PHASE III

ELI & ASSOCIATES, INC.
 ENGINEERS & LAND PLANNERS
 408 BIRD AVE., MISSOULA, MONTANA 59802
 (406) 338-5222 FAX (406) 338-5288
 MISSOULA, MONTANA



TRACT 4000 000 000 000 000 000 000

CERTIFICATE OF SUBDIVISION
 I, the undersigned Surveyor of Missoula County, Montana, having examined the foregoing subdivision map, and having determined that it complies with the provisions of the Subdivision Map Act, Chapter 70, Montana Code Annotated, and that the same is in accordance with the law, I hereby certify that it is correct and true.

LEGAL DESCRIPTION
 A SUBDIVISION LOCATED IN THE NORTHWEST ONE-QUARTER (NW1/4) OF SECTION 7,
 TOWNSHIP 13 NORTH, RANGE 59 WEST, 94M, MISSOULA COUNTY, MONTANA

CERTIFICATE OF SUBDIVISION
 I, the undersigned Surveyor of Missoula County, Montana, having examined the foregoing subdivision map, and having determined that it complies with the provisions of the Subdivision Map Act, Chapter 70, Montana Code Annotated, and that the same is in accordance with the law, I hereby certify that it is correct and true.

STATE OF MONTANA
 MISSOULA COUNTY

MISSOULA COUNTY ATTORNEY
 I, the undersigned County Attorney, do hereby certify that I have examined the plat of subdivision and find the same to be correct and true.

CERTIFICATE OF SUBDIVISION
 I, the undersigned Surveyor of Missoula County, Montana, having examined the foregoing subdivision map, and having determined that it complies with the provisions of the Subdivision Map Act, Chapter 70, Montana Code Annotated, and that the same is in accordance with the law, I hereby certify that it is correct and true.

MISSOULA COUNTY ATTORNEY
 I, the undersigned County Attorney, do hereby certify that I have examined the plat of subdivision and find the same to be correct and true.

Bank of Montana
 2023
 ALPHABETICALLY BY PAGE NO.
 C.T.P. PAGE 5035 PAGE 81
 C.C. PAGE 4325 PAGE 83

MISSOULA COUNTY ATTORNEY
 MISSOULA COUNTY ATTORNEY